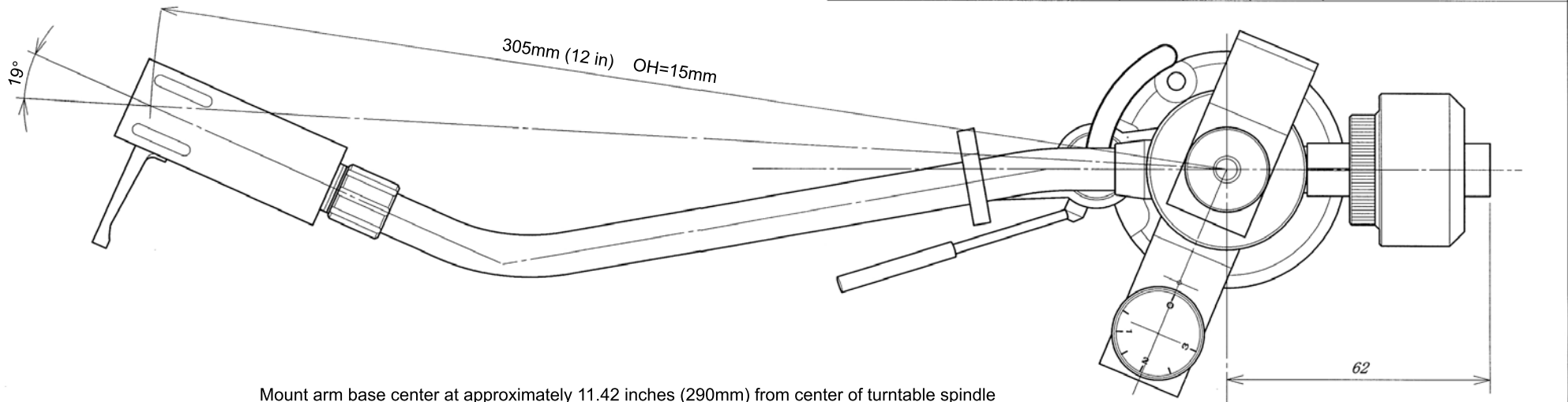
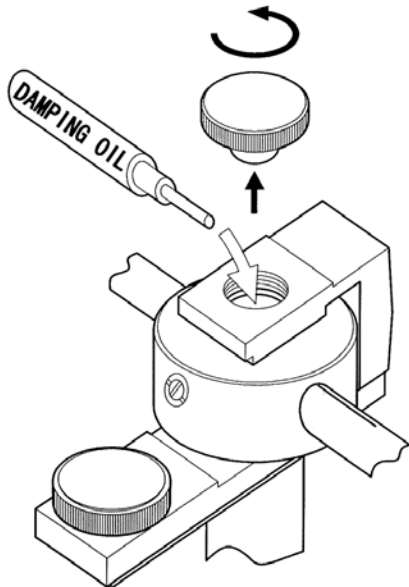
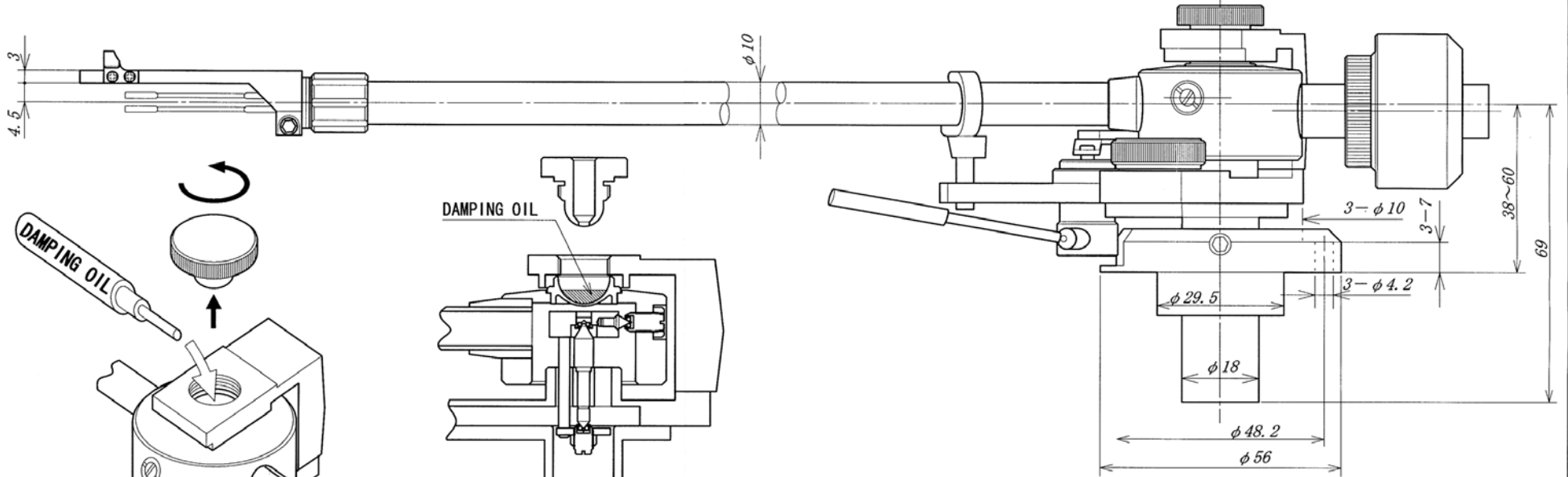


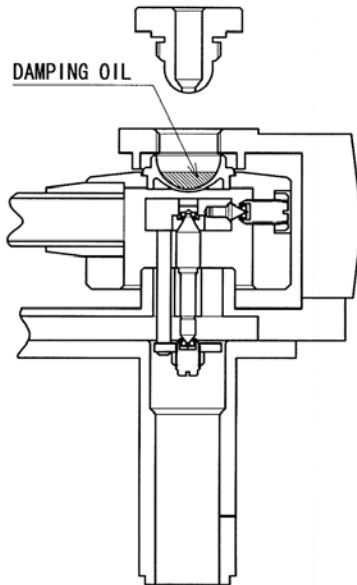
| TOLERANCE | I     | II   | III  | ANGLE | SYMBOL | DATE | REVISION |
|-----------|-------|------|------|-------|--------|------|----------|
| 0.5 ~ 6   | ±0.05 | ±0.1 | ±0.2 | ±0.5° | △ x    |      |          |
| 6 ~ 30    | ±0.1  | ±0.2 | ±0.5 | ±1°   | △ x    |      |          |
| 30 ~ 120  | ±0.15 | ±0.3 | ±0.8 | ±1.5° | △ x    |      |          |
| 120 ~     | ±0.2  | ±0.5 | ±1.2 |       |        |      |          |



Mount arm base center at approximately 11.42 inches (290mm) from center of turntable spindle



Unscrew cap at top of tonearm, and pour silicon damping oil into reservoir



Fill reservoir cup to approximately half full level as illustrated above

| No.                    | QNT | DRAWING No. | PARTS NAME | MATERIAL         | FINISH | NOTES     |
|------------------------|-----|-------------|------------|------------------|--------|-----------|
| MATERIAL               |     |             |            | PARTS NAME       |        |           |
| Magnesium and Aluminum |     |             |            | S260-OD TONEARM  |        |           |
| FINISH                 |     |             |            | DRAWING No.      |        |           |
| DESIGNED               |     |             |            | APPROVED         |        | P260-OD-A |
| DRAWN                  |     |             |            | CHECKED          |        |           |
| MARCH 10, 2016         |     |             |            |                  |        |           |
| 3RD ANGLE PROJECTION   |     |             |            |                  |        |           |
| UNIT : mm              |     |             |            | SCALE 1 : 1      |        |           |
|                        |     |             |            | <b>REK-O-KUT</b> |        |           |